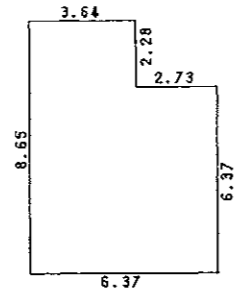


各階平面図

7.5-31
建築物図面

127935

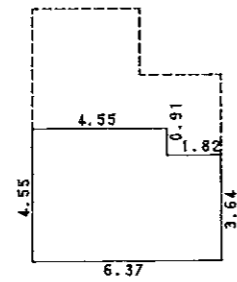
1階



求積表

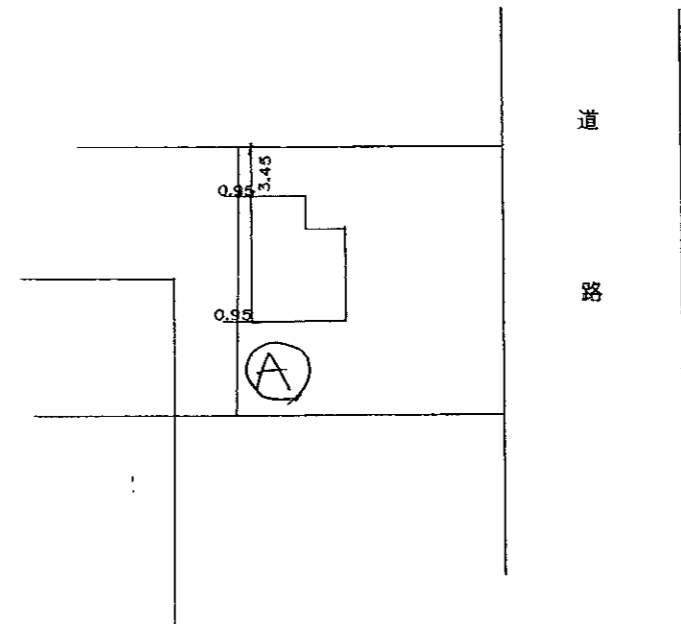
8.65	X	3.64	=	31.4860
6.37	X	2.73	=	17.3901
合計				48.8761
床面積				48.87 m ²

2階



求積表

4.55	X	4.55	=	20.7025
3.64	X	1.82	=	6.6248
合計				27.3273
床面積				27.32 m ²



縮尺 1/250

縮尺 1/500